

**D2103V**

## IP VIDEO DOOR STATION

For houses and buildings with up to 3 units  
3 Call Buttons

# ANSWER YOUR DOOR ANYWHERE.

## ADVANTAGES

### HOW DOES IT WORK?

Imagine, you are not at home and your children have locked themselves out or the courier wants to deliver a parcel. With DoorBird this is no longer a problem. Every time someone rings the doorbell you will get a push notification on your smartphone or tablet. Via the DoorBird App you are not only able to talk to the visitor but also see them live in HD quality. You will never miss a visitor again. With DoorBird you are on the move and yet at home, even if a burglar rings at the door to check if someone is at home.

### SMART HOME STARTS AT THE FRONT DOOR

DoorBird is the smart solution for your house entrance. Simply connect your DoorBird IP Video Door Station to your smartphone and talk to your visitor - anywhere you are. The IP Video Door Station can be used as a stand-alone unit or can be integrated into an existing Smart Home platform. Even existing classic installations such as an electric door opener can still be used and controlled via the DoorBird App.

### QUALITY MADE IN GERMANY

All DoorBird products are designed, developed and produced by Bird Home Automation GmbH in Berlin, Germany. We manufacture all products with the greatest care and precision, and deliver them to our customers all over the world.



#### Open API

- Local interface for integration with third-party systems and SIP



#### Video and audio call

- On smartphones, tablets (iOS, Android), IP and landline phones (SIP)



#### Smart Transmission Mode (STM)

- Real-time audio / video communication, optimized for mobile devices via WiFi, 3G, 4G, 5G



#### Smart Home & NVR compatible

- Control4, Loxone, Crestron, Synology, AVM FRITZ!Fon, URC, QNAP, RTI, ELAN, Fibaro, Bang & Olufsen and others



#### Automatic door buzzer

- For use in medical offices and office environments

#### HD HDTV Video

- Ultra wide-angle, hemispheric lens, 180°

#### 4D Motion sensor with 4D technology

- Distance up to 10 m adjustable via App (interval: 1 m)



#### Free visitor history

- Store still images for free, optional video recording available



#### Light sensor

- For night vision mode



#### Call button

- With backlit nameplate



#### Individual action schedules, e.g.:

- RFID card „abc“ has only access on Wednesday from 9 am until 11 am
- 4D motion sensor switches on external lamp between 9 pm and 6 am



#### Microphone

- Clear voice transmission



#### Easy connection to the network

- Connection via a network cable or a bell wire (with a 2-wire converter) to a RJ45 socket (PoE, network data)



#### Geofencing

- Automatic door and gate opening when returning home



#### Noise reduction and echo cancellation (AEC, ANR)



#### Two freely configurable bi-stable switching relays

- Two doors or gates can be controlled via App
- Status configurable via App: temporary or permanent circuit



#### Night vision

- With 12 Infrared LEDs



#### RFID reader

- Configurable remotely via App (e.g. time frame)

# TECHNICAL SPECIFICATIONS

## GENERAL

Front panel	3 mm (0.12 in) Available in over 50 RAL colors and surfaces including stainless steel V2A / V4A (see material guide)
Mounting housing (backbox)	Stainless steel
Mounting type	Flush-mounted, surface-mounting housing sold separately
Call button	Illuminated
Nameplate	Plastic. Engravable metal nameplate sold separately, see <a href="http://www.doorbird.com/buy">www.doorbird.com/buy</a>
Power supply	15 V DC (max. 15 W) or Power over Ethernet (PoE 802.3af Mode-A)
Weight	1818 g
Connectors	<ul style="list-style-type: none"> <li>• RJ45, for LAN/PoE</li> <li>• Bistable latching relay #1, max. 24 V DC/AC, 1 Ampere, e.g. for electric door opener</li> <li>• Bistable latching relay #2, max. 24 V DC/AC, 1 Ampere, e.g. for electric door opener</li> <li>• External input for external door opener button</li> <li>• 15 V DC input (+, -), max. 15 W</li> <li>• Relays can be expanded / detached with DoorBird I/O Door Controller</li> </ul>
Weather-proof	Yes, IP65
Approvals	IP65, CE, FCC, IC, RoHS, IK08, REACH, IEC/EN 62368, IEC/EN 62471
Dimensions	313 x 131 x 48,75 mm (H x W x D) 12,32 x 5,16 x 1,92 in (H x W x D)
Operating conditions	-25 to +55°C / -13 to 131°F Humidity 10 to 85 % RH (non condensing)
Scope of delivery	<ul style="list-style-type: none"> <li>1x Main Electrical Unit</li> <li>1x Front panel</li> <li>1x Flush-mounting housing (backbox)</li> <li>1x Power supply unit (mains adaptor) with four country-specific outlet adaptors (110 - 240 V AC to 15 V DC)</li> <li>1x RFID key fob</li> <li>1x Screwdriver</li> <li>1x Quickstart guide with Digital Passport</li> <li>1x Installation manual</li> <li>1x Small parts</li> </ul>
Warranty	see <a href="http://www.doorbird.com/warranty">www.doorbird.com/warranty</a>

## CURRENT SYSTEM REQUIREMENTS

System requirements	<p>Mobile device: Newest iOS on iPhone/iPad, newest Android on Smartphone/Tablet</p> <p>Internet: High-Speed Landline Broadband Internet connection, DSL, cable or fiber optic, no socks or proxy server</p> <p>Network: Ethernet Network, with DHCP</p>
Recommended installation height	Camera lens should be at a min. height of 145 cm (57 in). Before the installation please determine your optimal installation height.

## VIDEO

Camera	HDTV 720p, dynamic (VGA - HDTV)
Lens	High-end ultra wide-angle hemispheric lens 180° (D), 140° (H), 100° (V), straightened, IR-capable
Night-vision	Yes, light sensor, automatic IR-cut filter, 12 Infrared LEDs (850 nm)

## AUDIO

Audio components	Speaker and microphone, noise reduction and echo cancellation (ANR, AEC)
Audio streaming	Two-way, full duplex

## NETWORK

Ethernet	RJ45 jack, PoE 802.3af Mode-A, 10/100 Base-T
Supported protocols	HTTP, HTTPS, SSL/TLS, Bonjour, DNS, RTSP, RTP, TCP, UDP, RTCP, ICMP, DHCP, ARP, SIP, DTMF (RTP [RFC-2833], SIP INFO [RFC-2976]), STM

## MOTION SENSOR

Type	Active
Detection angle	54° (H), 70° (V)
Range	1 - 10 m (3.3 - 32.9 ft), depends on environment, configurable in 1 m (3.3 ft) steps.
Technology	4D. Based on multiple integrated sensors and algorithms, e.g. Radio Frequency Energy (RFE)
Configuration	<p>Via App, e.g.</p> <ul style="list-style-type: none"> <li>• Range (1 - 10 m / 3.3 - 32.9 ft)</li> <li>• Movement direction (coming, leaving, both)</li> <li>• Individual events (e.g. switch a relay, push notification, SIP call [audio/video], HTTP(s) notification)</li> <li>• Individual schedules</li> </ul>

## RFID

Type	Active Reader Passive Tag (ARPT) system
Standard	ISO/IEC 18000-2:2009 Part 2, EM4100, EM4102
Frequency	125 KHz
Range	0 - 3 cm, depends on environment
Antenna	Internal
Compatible Transponder	RFID key fobs, sold separately, see <a href="http://www.doorbird.com/buy">www.doorbird.com/buy</a>
Configuration	<p>Up to 100 tags manageable</p> <p>Via App, e.g.</p> <ul style="list-style-type: none"> <li>• Tag (add, delete)</li> <li>• Individual events (e.g. switch a relay, SIP call [audio/video], HTTP(s) notification)</li> <li>• Individual schedules</li> </ul>

## INTEGRATED WIRELESS MODULES

RFID	125 KHz
Sensor	24 GHz, can be disabled

## THIRD-PARTY INTEGRATION (DOORBIRD CONNECT)

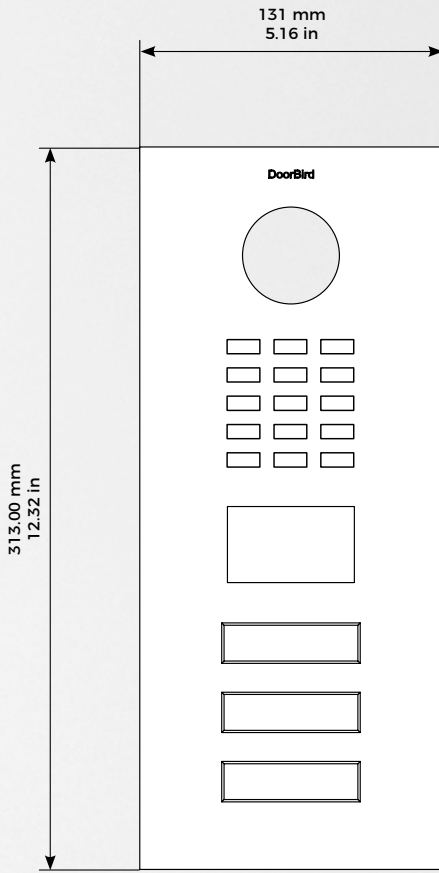
Partnerintegrations	see <a href="http://www.doorbird.com/connect">www.doorbird.com/connect</a>
API	see <a href="http://www.doorbird.com/api">www.doorbird.com/api</a>
Simultaneous video streams	One, for event-based and continuous recording

## OPTIONAL ACCESSORIES

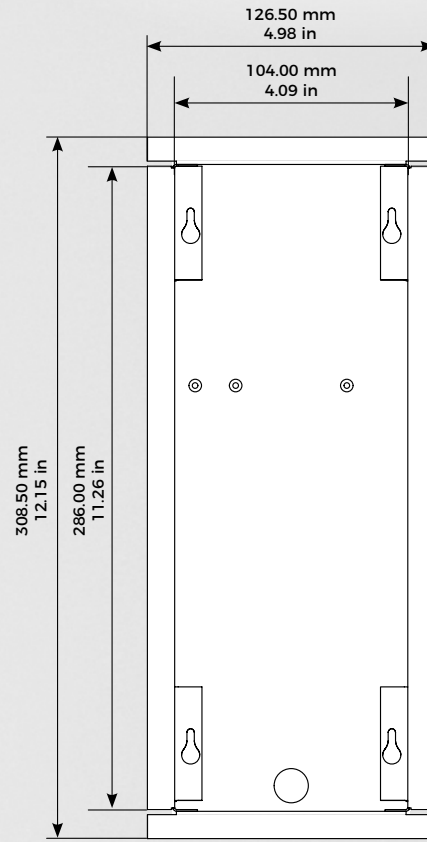
Sold separately	see <a href="http://www.doorbird.com/buy">www.doorbird.com/buy</a>
-----------------	--

Special remarks:  
Assembly requires professional skills or a technician.

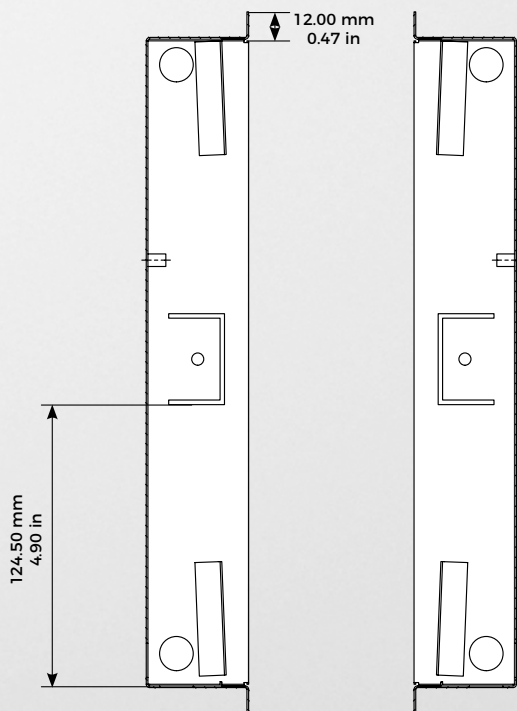
Front panel material thickness: 3.0 mm (0.12 in)



Front panel

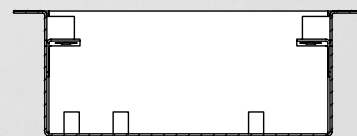
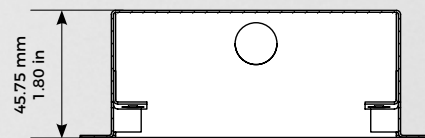


Flush-mounting housing (backbox)



Flush-mounting housing (backbox)

Flush-mounting housing (backbox)



Flush-mounting housing (backbox)

This data sheet is valid for the following EANs (discontinued on August 1, 2021):

4260423860438	4260423863552	4260423863699	4260423863828
4260423862579	4260423863569	4260423863705	4260423863835
4260423860766	4260423863576	4260423863712	4260423863842
4260423862586	4260423863583	4260423863729	4260423863859
4260423862593	4260423863590	4260423863736	4260423863866
4260423862609	4260423863606	4260423863743	4260423863873
4260423862616	4260423863613	4260423863750	4260423863880
4260423862623	4260423863620	4260423863767	4260423863897
4260423867246	4260423863637	4260423863774	4260423863903
4260423863507	4260423863644	4260423863781	4260423863910
4260423863514	4260423863651	4260423863798	4260423863927
4260423863521	4260423863668	4260423863804	4260423862647
4260423863538	4260423863675	4260423863811	4260423862654
4260423863545	4260423863682	4260423862630	