



# LumiCloud

## The Next-Generation of Video Surveillance

Revolutionize the way you monitor and manage your security system.



**LumiCloud is a Video Surveillance as a Service (VSaaS) solution** powered by a variety of enterprise-grade algorithms that provides the ability to search, receive alerts and analyze patterns of detections across locations and historical data. Data is centrally stored in the cloud with easy access from web browsers and smart phone apps.

LumiCloud supports high-resolution video streams, ensures clarity, and provides real-time access from anywhere. This platform provides advanced analytics, customizable alerts, effective bandwidth management, and simple subscription-based scalability.



View and search live or recorded footage through a web browser or smart phone.

### Experience seamless integration with

- Luminy's Network Cameras
- Luminy's NVRs
- Luminy's Network Switches
- Luminy's Access Control
- LumiGuardian Solar Trailer

## Key Features



### Dashboard Management

- Access cameras and other devices quickly and easily
- Eliminates the need for port forwarding or IP addresses
- Connect anywhere, anytime, and from any device



### Auto Detect & Connect

- Add devices quickly with auto detect
- View Playback video remotely by connecting an NVR with a camera
- Connect to a LumiGuardian or managed PoE switch



### Quick Setup Time

- Connect, configure, and remotely login into devices at any time
- No server hardware to install, manage, or configure



### Optimize Your IT Costs

- No expensive server, maintenance staff, or backup required



### Trusted

- Cloud-based video storage and management
- Reliable protection from internal and external threats

# LumiCloud is a comprehensive monitoring and management platform for Luminyx products, offering real-time visibility, security, storage, and system health information.

## Dashboard

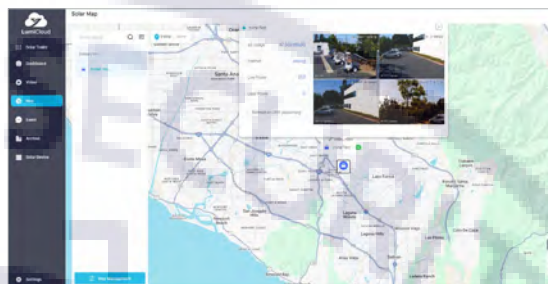
- Manage sites, devices, cameras, licenses with one easy-to-use interface
- Connect anywhere, anytime, and from any device
- Web-based dashboard requires no additional software



Track devices, cameras, users and data such as battery usage and other key metrics.

## Mapping

- Provides visualization of all device locations
- Based on GPS location data
- Interactive map allows for zooming in and tracking



Track and locate devices with interactive 3D mapping.

## Events

- Analytics-based searching to find what matters most
- View, download, and share events based on customizable search criteria
- Automate responses and alarms for specific events



Find what you need more efficiently by using analytics and customizable search criteria.

## Video Playback

- Watch live video, playback recorded footage, pan/tilt/zoom, and search by time/date
- Supports two-way audio
- Turn lighting on or off







Simplify network administration with real-time monitoring and configuring directly from LumiCloud.

## Cloud-Managed Switch

- PoE Watchdog automatically detects and resets unresponsive devices
- Long-distance PoE extends power delivery up to 820 ft.
- Bandwidth allocation prioritizes the most important ports
- Real-time network health monitoring



## Key Benefits

-  A **powerful** yet user-friendly web client interface for convenient access and control from any device
-  Supports **cutting-edge AI analytics** and flexible local and cloud-based storage options
-  **Smart tools and features** enable users to tailor workflows to their specific requirements
-  Flexible scaling to allow for an infinite number of channels and storage capacity



## LumiCloud with Luminyx Cloud Managed POE Switches

Simplifying Network Management with LumiCloud

- **Centralized Network Control:**
  - Remote Monitoring and Management
  - Simplified Configuration Processes
  - Real-Time Network Health Monitoring
- **Scalable and Flexible Deployment**
- **Remote Access with Secure Connectivity**

## LumiCloud Supports NVR, Cameras and Analytics



### NVR

- All Luminyx NVR Models Supported
- Supports any camera connected & supported by Luminyx NVR
- PTZ control (for Luminyx cameras)
- 2 Way Audio



### Cameras

- Select Models Directly Supported
- PTZ control (for Luminyx cameras)
- 2 Way Audio

### Analytics

- iMD (Intelligent Motion Detection)
- Human Detection
- Vehicle Detection
- VCA (Video Content Analysis)
- Tripwire
- Trespassing



Discover the power of the LumiCloud eco-system, where cutting-edge cameras, NVRs, network switches, access control systems, and innovative solutions like LumiGuardian come together. By seamlessly connecting these devices, you gain secure data transmission and storage, empowering you with comprehensive control. Manage and monitor everything effortlessly from your browser or smartphone for an unparalleled sense of security and convenience.

## LumiCloud with LumiGuardian

LumiCloud supports LumiGuardian by providing a remote monitoring and management platform for the various systems integrated into LumiGuardian



### Real-Time Monitoring

LumiGuardian is equipped with various environmental sensors and video cameras that transmit real-time data to the LumiCloud platform. Users can remotely monitor the trailer's location, solar energy levels, and security systems through LumiCloud's browser-based interface.



### Data and Reporting

LumiCloud can generate reports on the performance and usage of the LumiGuardian, including energy production from solar panels, device uptime, and video of critical events. This data helps maintain the trailer and optimize its performance.



### System and Device Health Monitoring

LumiCloud provides detailed insights into the performance of the LumiGuardian's systems, including the solar power generation, battery status, and device health. The health care feature allows dealers or operators to access a device monitoring dashboard, which helps ensure LumiGuardian is running smoothly by monitoring key performance indicators (KPIs).



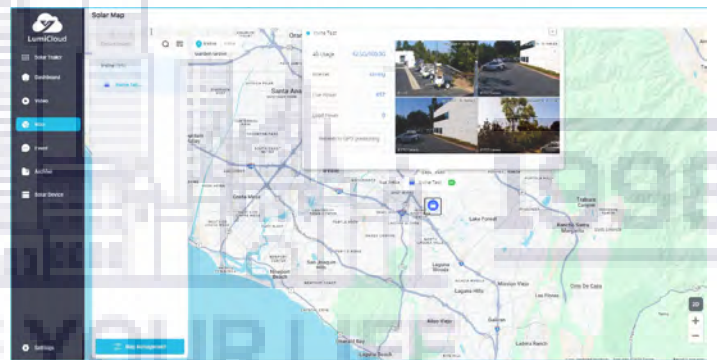
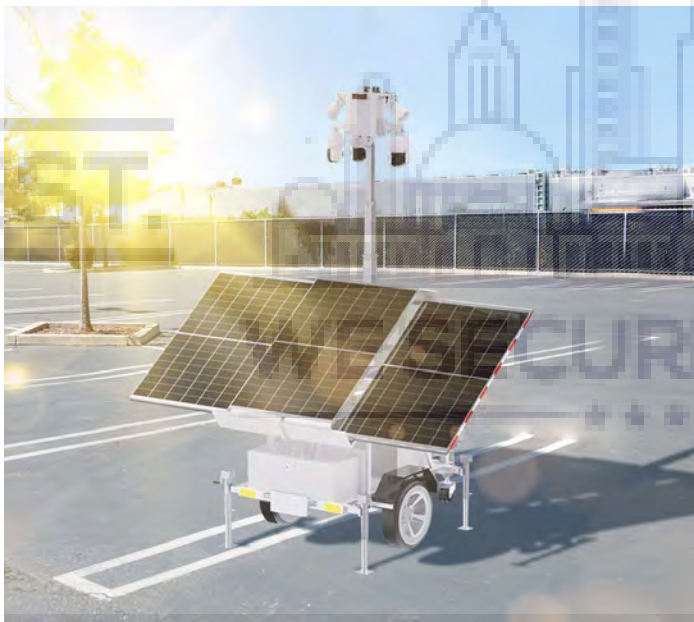
### Event-Based Video Recording

Record video based on specific events to save storage space and focus on critical events. Video footage is stored for up to 30 days for playback and review.



### Alerts and Notifications

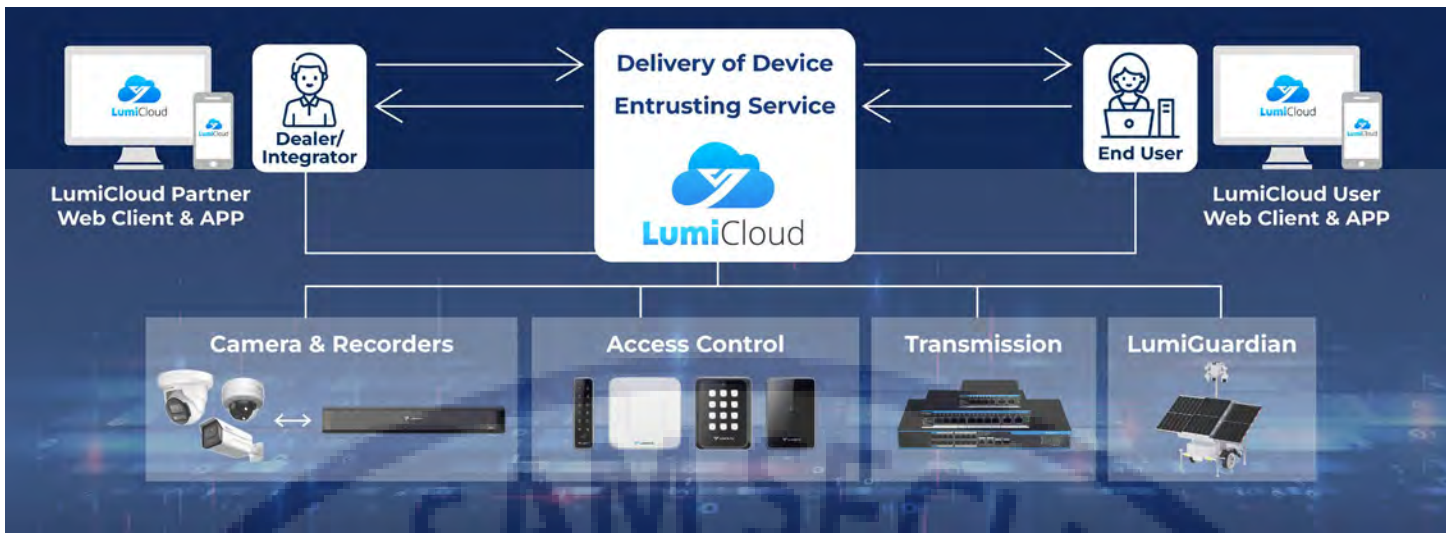
LumiCloud can send automatic alerts based on predefined conditions. For example, users can be notified if there are any power issues, unauthorized access, or security breaches around the LumiGuardian trailer.






*Keep an eye on important assets and events with LumiCloud. Locate the current position of LumiGuardian via the integrated Google Maps location and view live video at any time from any web browser.*

*Use LumiCloud to access and interact with the LumiGuardian at any time and from any place.*

# Systems Diagram



The **LumiCloud Systems Diagram** illustrates how a security systems dealer would use the Luminy's partner portal to deliver device licenses to the end user. The end-user can provide the security dealer with access to devices for monitoring, remote maintenance, and services. This is called entrusting service and supports all device platforms such as cameras, NVRs, access control and transmission devices, and speciality solutions such as the LumiGuardian.

Features	 LumiGuardian Solar Trailer	 Luminy's NVRs	 Luminy's Cameras (Select Models)	 Luminy's Network Switches	 Luminy's Access Control
Secure Remote Connection	✓	✓	✓	✓	✓
Auto Detect Device on Wired Network (Internet connection required)	✓	✓	✓	✓	✓
Add Device via QR Code	✓	✓	✓	✓	✓
User Roles	✓	✓	✓	✓	✓
Remote Monitoring/ Live Status	✓	✓	✓	✓	✓
Simplified Configuration Processes	✓	✓	✓	✓	✓
Comprehensive Reports	✓	✓	✓	✓	✓
Real-Time Network Health Monitoring	✓	✓	✓	✓	✓
AI Notification	✓	✓	✓	-	-
View Live & Recorded Video	✓	✓	✓	-	-
GPS Location and Mapping	✓	-	-	-	-
Monitor PoE Power	-	-	-	✓	-
Credentials and Rules	-	-	-	-	✓
Door Management	-	-	-	-	✓

## MVP Program for Luminys Authorized Dealers

Join the Luminys MVP program to automate the LumiCloud license management process. After purchasing any LumiCloud licenses, they will appear in your LumiCloud account where you can assign them to end-users and devices.

LumiCloud licenses require registration to the Luminys MVP program. Register now at <https://mvpprogram.luminyscorp.com/>



### User Interface

#### Web Client

Google Chrome, Safari, Firefox, Microsoft Edge

#### Mobile Application

iOS, Android OS

## LumiCloud HD Video Unity License

LumiCloud HD Video Unity License supports one Luminys camera or NVR channel for one-year with high-performance video surveillance solution utilizing AI-based events, 30-day rolling AI Event cloud storage, remote maintenance, real-time device health monitoring, comprehensive support for enhanced security monitoring. Archive important video events indefinitely in the cloud (requires active license and provides for up to 30 GB Archive storage per camera at 1080p resolution).

## LumiCloud Solar Trailer License (4 Channel)

The LumiCloud Solar Trailer License provides one year of application support and integration for up to four solar trailer channels.

## LumiCloud Switch 100 Channel License

The LumiCloud Switch 100 Channel is a one-year license for a high-performance network switch, enabling efficient data exchange and monitoring. It supports up to 100 channels, including Power over Ethernet (PoE) management.

## LumiCloud Data Packages for the LumiGuardian Solar Trailer

These data packages offer 10GB, 100GB, and 200GB monthly options for business users in the USA and Canada. They include high-speed 4G connectivity with a 30-day validity period, supporting AT&T, Verizon, and T-Mobile in the USA, and Rogers, Bell, and Telus in Canada.