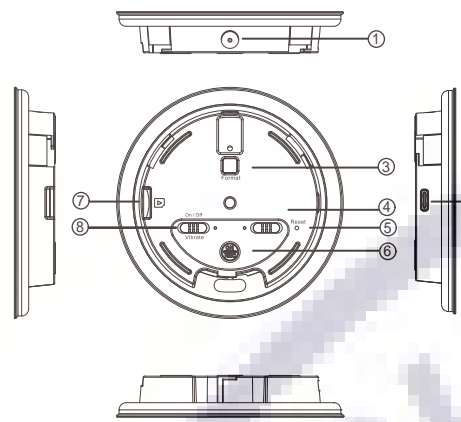


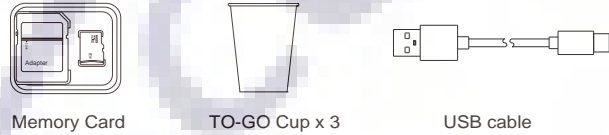
## 1. Names and parts



1. CMOS Lens
2. USB Port
3. Format Button
4. Continuous Rec(Left)/ Motion Detection Rec (Right)
5. Reset Button
6. ON/REC Button Wi-Fi Button
7. Memory Card Slot
8. Vibration On/Off Switch

\* This product is for Law Enforcement and Home Security Use Only!  
\* Warranty will be void if serial number sticker is tampered.

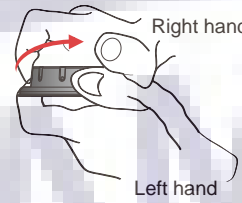
## 2. Package Content



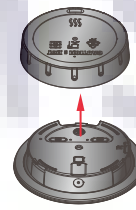
**WARNING: DO NOT FILL THE CUP WITH HOT WATER.**

## 3. Assemble & disassemble DVR cover

Disassemble the DVR cover



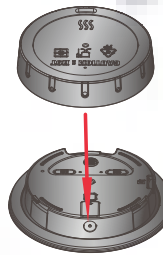
1. Hold the DVR from the bottom by left hand. Carefully twist the cover of DVR by right hand following red arrow pointed direction.



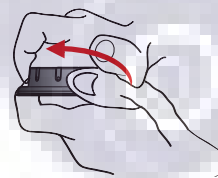
2. Remove the cover by following red arrow pointed direction.

Assemble the DVR cover

**Warning! Follow instructions below to avoid lens damage.**



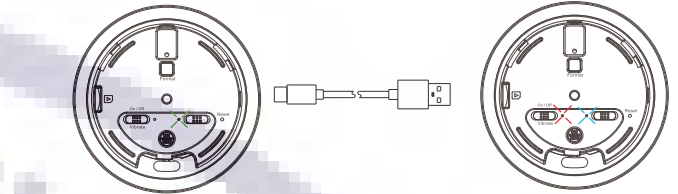
1. Align the guiding points on the cover to the red arrow mark on the DVR before assembly.



2. Twist the cover by following red arrow pointed direction until it is properly locked.

## 4. Charge battery

Connect to PC via USB cable



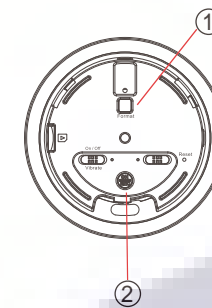
LED bar

Charge LED(Green)  
When battery is fully charged,  
the green LED will go off.

Power LED(Blue)  
Rec LED(Red)

1. Remove the cover from the DVR and connect the supplied USB cable into the device.
2. Plug the USB cable to PC, the green Charge LED of the device will illuminate to show the charging is in process.
3. Green LED will go off when the battery is fully charged.

## 5. Format memory card



1. Long press the Format Button (1) and hold.
2. Use another finger to press the Power On button (2) for 2 seconds.
3. Power LED will illuminate, hold the Format button until the Rec LED starts to blink.
4. Release the Format button. Rec LED will go off after 5 seconds to show the formatting is completed.

## 6. Retrieve files from DVR

There are two ways to download video/photo files.

1. Use memory card reader to download video/photo files.
2. With the device powered on and memory card inserted, connect the device to PC by USB cable. It will be recognized by PC as an external drive for user to retrieve the files.

## 7. Date and time setting

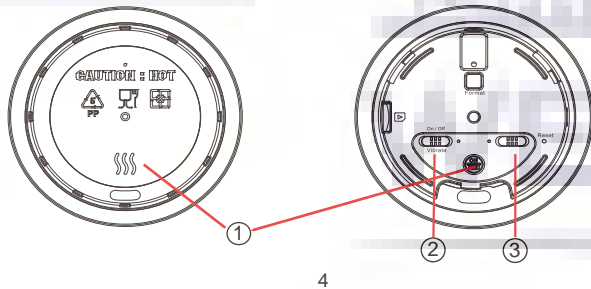
Please refer to the Synchronize the Time steps on the PV Cam Viewer for IP Cam quick guide.

## 8. Operation

Please note, memory card needs to be formatted on the device for the unit to recognize it. Formatting memory card by a PC is not recommended and may result in recording failure.

### 8.1 Instant Recording

When the unit is assembled, press the area (1) on the cover for 3 seconds. DVR will power on and start to record automatically after vibrating once. To turn off the device, press the area (1) on the cover for 3 seconds and the DVR will be turned off after vibrating twice.

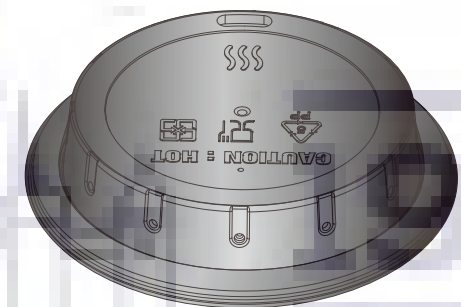


### 8.2 Wi-Fi Operation

With device powered on, short press (1) to turn on Wi-Fi function. To turn off the Wi-Fi function, just short press (1). For more information about Wi-Fi connection setup, please refer to PV Cam Viewer quick guide.

### 8.3 Vibration On/Off

Switch (2) to On/Off to activate/deactivate vibration mode.



LawMate, innovation never stops

**LawMate®**